

FINE CONTROLS (UK) LTD



Fine Controls have been supplying process controls & instrumentation equipment since 1994, & now serves an ever expanding customer base, both in the UK & globally.

We offer a full range of valve & instrumentation products & services, with our product range representing leading technologies & brands:

Flow: Flow Meters & Transmitters, Flow Switches, Flow Control Valves & Batch Control Systems

Temperature: Temperature Probes & Thermowells, Temperature transmitters, Temperature Regulators & Temperature Displays

Level: Level Transmitters & Switches

Pressure: Pressure Gauges & Transmitters, Precision & High Pressure Regulators & I-P Converters, Volume boosters.

Precision Pneumatics: Pressure Regulators, I-P Converters, Volume Boosters, Vacuum Regulators

Valves: Solenoid & Pneumatic Valves, Control Valves & Positioners, Actuated Ball, Globe or Diaphragm Valves & Isolation Valves

Services: Repair, Calibration, Panel Build, System Design & Commissioning

 A rotork® Brand
FAIRCHILD



bürkert



SIEMENS



alcon
SOLENOID VALVES

A rotork® Brand



MIDLAND-ACS
A rotork® Brand



Honeywell



 **Bourdon**
Baumer Group



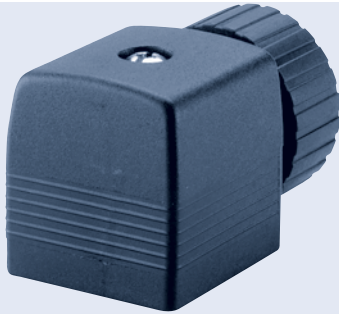
SOLDO
CONTROLS

A rotork® Brand



Fine Controls (UK) LTD, Bassendale Road, Croft Business Park,
Bromborough, Wirral, CH62 3QL UK
Tel: 0151 343 9966
Email: sales@finecontrols.com

Cable Plug acc. to DIN EN 175301-803, Form A



- Complete program
- Contact form 18 mm
- Also available with LED indicator
- Optional 4-pin version for pressure switch or impulse valves respectively
- Versions with high-power, power reduction and inverter for impulse valves

Plug for the connection of electrical components according to DIN EN 175301-803 (previously DIN 43650, Form A).

Standard version without circuit, with LED, varistor, rectifier, pole protection- or/and free-wheeling diode.

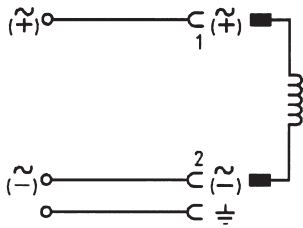
Variants with HL-circuit to increase performance of solenoid valves, LR-circuit to decrease power consumption and IN-circuit for control of impulse coils.

Technical data	
Body material	Polyamide, polycarbonate (version with LED)
Contact material	Brass, silver-plated
Max. continuous temperature	+90 °C (-10 ... +55°C by version HL, LR and IN)
Cable diameter	6 - 7 mm (other diameter on request)
Cable outlet	Can be rotated through 4 x 90°
Contact distance	18 mm according to DIN EN 175301-803 (previously DIN 43650, Form A)
Functional display	LED, colour red (optional), yellow with version HL and LR
Electrical connection	Screw terminal Max. 1.5 mm ²
Nominal voltage	Depending on version
Contact resistance	5 mΩ (typ.)
Protection class	IP 65
Number of terminals	
Standard	2 pins + protective earth conductor
Option	3 pins + protective earth conductor

Ordering chart

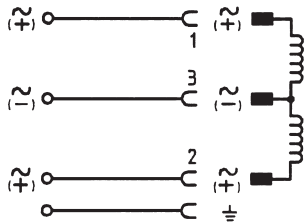
The delivery of a cable plug includes the flat seal and the steel fixing screw (thick-film-passivated); in the case of stainless steel valves we recommend a cable plug with a stainless steel screw (see ordering chart without circuit, or on request)

without circuit



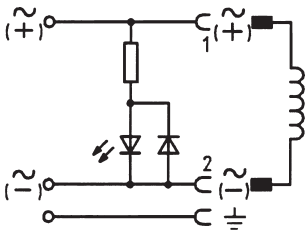
Voltage and version type	Current rating	Item no. without cable	Item no. 1m cable	Item no. 3m cable
0 to 250 V/AC/DC with steel screw	max. 6 A	008 376	783 590	783 573
0 to 250 V/AC/DC with stainless steel screw	max. 6 A	132 445	-	-

without circuit, 3-pins + protective earth conductor



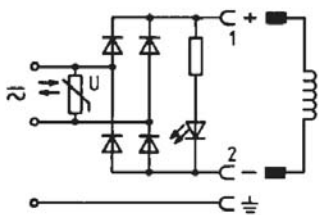
Voltage	Current rating	Item no. without cable	Item no. 1m cable	Item no. 3m cable
0 to 250 V/AC/DC	max. 6 A	008 526	-	-

with LED



Voltage	Current rating	Item no. without cable	Item no. 1m cable	Item no. 3m cable
12 to 24 V/AC/DC	max. 6 A	008 360	783 574	783 575
100 to 120 V/AC/DC	max. 6 A	008 361	-	-
200 to 240 V/AC/DC	max. 6 A	008 362	783 576	783 577

with rectifier, LED and varistor

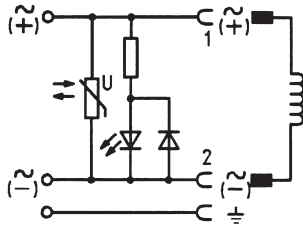


Voltage	Current rating	Item no. without cable	Item no. 1m cable	Item no. 3m cable
12 to 24 V/AC/DC	max. 1 A	008 363	-	-
100 to 120 V/AC/DC	max. 1 A	008 365	-	-
200 to 240 V/AC/DC	max. 1 A	008 366	-	-

Ordering chart

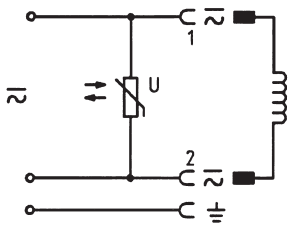
Included in delivery is a connector with flat seal and fixing screw.

with LED and varistor



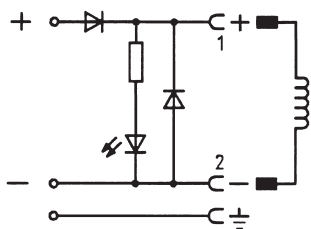
Voltage	Current rating	Item no. without cable	Item no. 1m cable	Item no. 3m cable
12 to 24 V/AC/DC	max. 6 A	008 367	783 578	783 579
100 to 120 V/AC/DC	max. 6 A	008 368	783 580	783 581
200 to 240 V/AC/DC	max. 6 A	008 369	783 582	783 583

with varistor



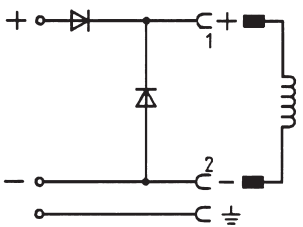
Voltage	Current rating	Item no. without cable	Item no. 1m cable	Item no. 3m cable
12 to 24 V/AC/DC	max. 6 A	008 370	783 584	783 585
100 to 240 V/AC/DC	max. 6 A	008 372	-	-

with pole protection, free wheeling diode and LED



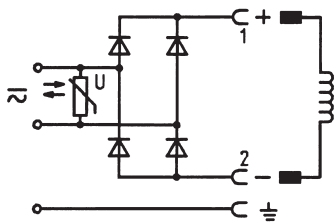
Voltage	Current rating	Item no. without cable	Item no. 1m cable	Item no. 3m cable
12 to 24 V/DC	max. 1 A	008 373	783 586	783 587

with pole protection and free wheeling diode



Voltage	Current rating	Item no. without cable	Item no. 1m cable	Item no. 3m cable
12 to 240 V/DC	max. 1 A	008 375	783 588	783 589

with rectifier and varistor



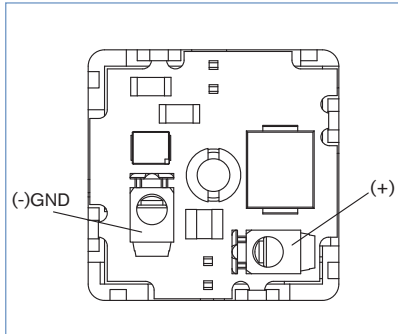
Voltage	Current rating	Item no. without cable	Item no. 1m cable	Item no. 3m cable
12 to 240 V/AC/DC	max. 1 A	008 374	-	-

Note: For cable plug with ASI, or high power electronic for AC, please see datasheet for Type 2511.

Ordering chart

The delivery of a cable plug includes the flat seal and the steel fixing screw (thick-film-passivated); in the case of stainless steel valves a cable plug with a stainless steel screw is recommended (on request).

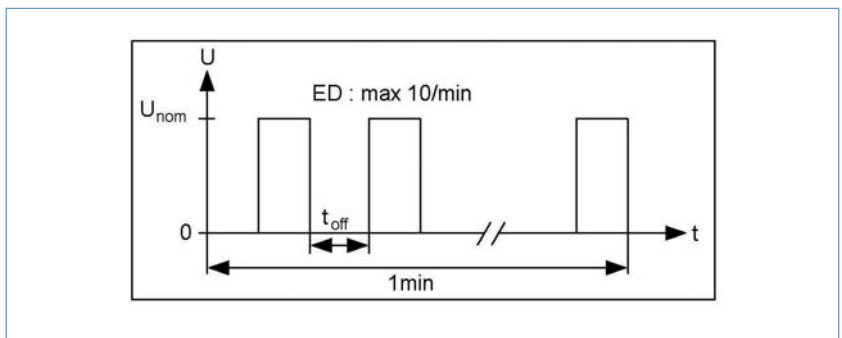
With high power electronics Type 2508 HL



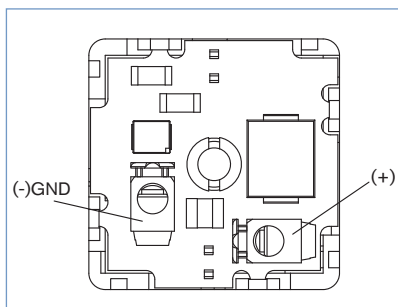
The high power electronics Type 2508HL increases the output of single solenoid valves. The high inrush power is generated by overexcitation. The adjustable pressure can be thus considerably extended. After switching the valve the electronic decreases to a small holding capacity. Also thereby power absorption and coil temperature in continuous operation can be much reduced. In holding operation the function is displayed by a yellow LED.

Suitable solenoid coils must be used for the respective valve supply voltage. Please contact your nearest Bürkert Sales Office for more information.

Technical data		Item no.
Operating voltage U_{nom}	12-24 VDC Supply voltage acc. to IEC 364-4-41 (PELV)	212 510
Max. current	3A (inrush), 0.2A (holding operation)	
Inrush power ($4 \times P_{nom}$) depending on valve	max. 72W at 24V (36W at 12V)	
Nom. holding current ($1/4 \times P_{nom}$) depending on valve	max. 4.5W at 24V (2.25W at 12V)	
Pull-in time	approx. 350 ms	
Max. duty cycle ED	10/min	
OFF-Time t_{off} between two switching operations	min. 1 sec	

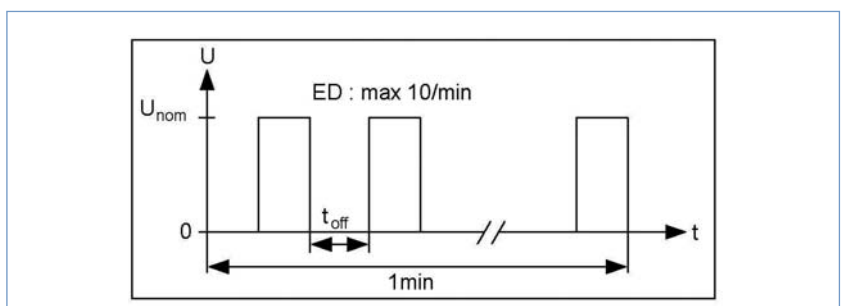


With power reduction Type 2508 LR



The electronics Type 2508 LR is used for power reduction of solenoid valves. Therewith the power consumption and the coil temperature can be reduced considerably e.g. with continuous operation. The inrush power conforms at this juncture to the nominal power of the coil. After switching the valve the electronic decreases to a small holding capacity. In holding operation the function is displayed by a yellow LED.

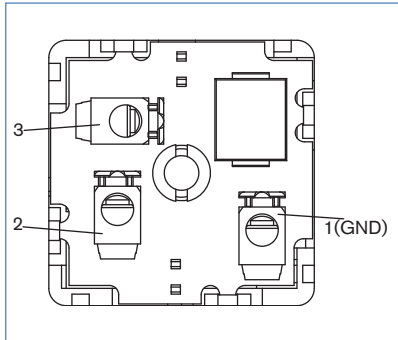
Technical data		Item no.
Operating voltage U_{nom}	12-24 VDC Supply voltage acc. to IEC 364-4-41 (PELV)	212 511
Max. current	1.5A (inrush), 0.4A (holding operation)	
Inrush power (P_{nom}) depending on valve	max. 36W at 24V (18W at 12V)	
Nom. holding current ($1/4 \times P_{nom}$) depending on valve	max. 9W at 24V (4.5W at 12V)	
Pull-in time	approx. 350 ms	
Max. duty cycle ED	10/min	
OFF-Time t_{off} between two switching operations	min. 1 sec	



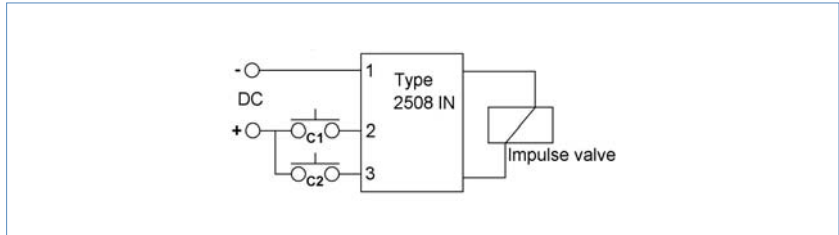
Ordering chart

The delivery of a cable plug includes the flat seal and the steel fixing screw (thick-film-passivated); in the case of stainless steel valves a cable plug with a stainless steel screw is recommended (on request).

With inverter electronics Type 2508 IN



Technical data		Item no.
Operating voltage U_{nom}	6-24 VDC	212 512
	Supply voltage acc. to IEC 364-4-41 (PELV)	
Max. coil current	0.6 A (100% ED); 1.2 A (50% ED);	
Max. impulse length	300 ms (at >0.6A)	



The inverter electronics Type 2508 IN is used to control impulse valves with reverse polarity control by means of 3 control signals (ON, OFF and GND). The switching occurs by reversing the polarity of the valve supply voltage.

Please contact your nearest Bürkert sales office with regard to suitable magnetic coils.

1	2	3	PIN1	PIN1
GND	+ DC	-	+ DC	GND
GND	-	+ DC	GND	+ DC
GND	+ DC	+ DC	+ DC	+ DC
GND	-	-	-	-

i Further versions on request



Material

with EPDM or Silikon flat seal



Additional

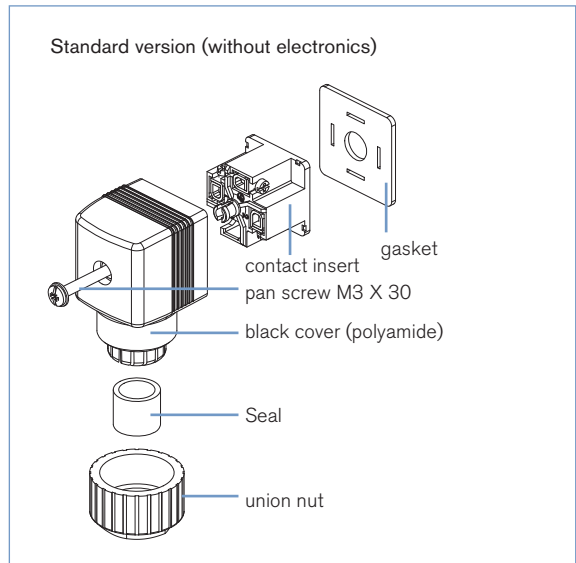
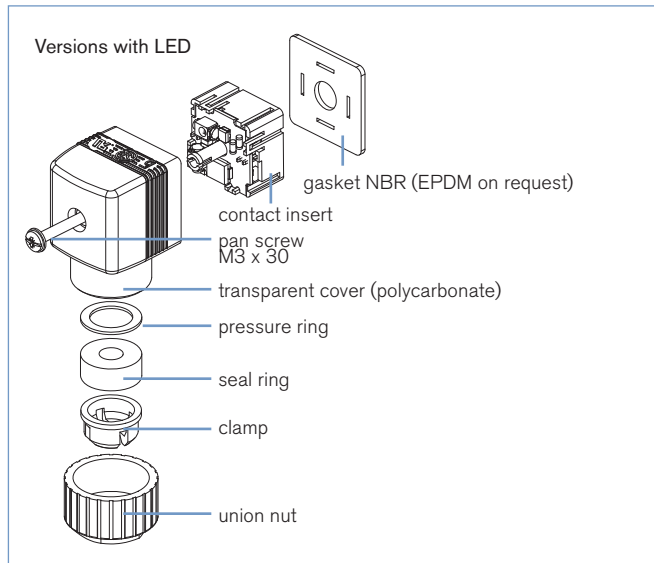
Versions with 1 or 3 m cable

For other cable diameter

With blue coloured union nut for intrinsically safe solenoid valves

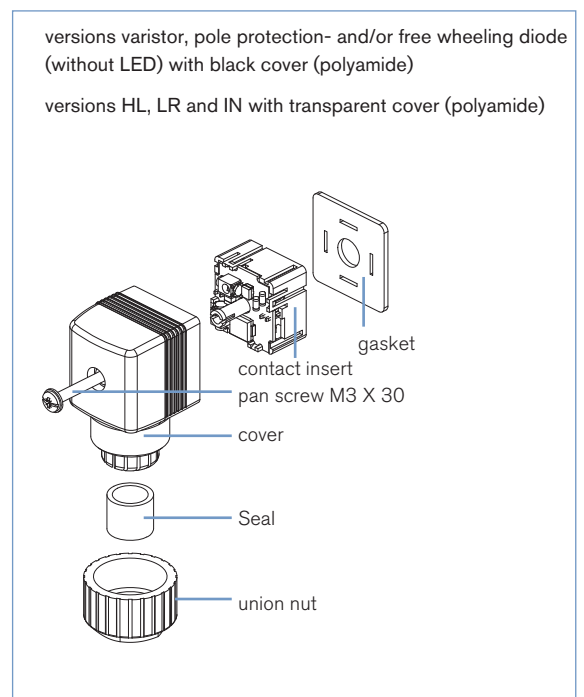
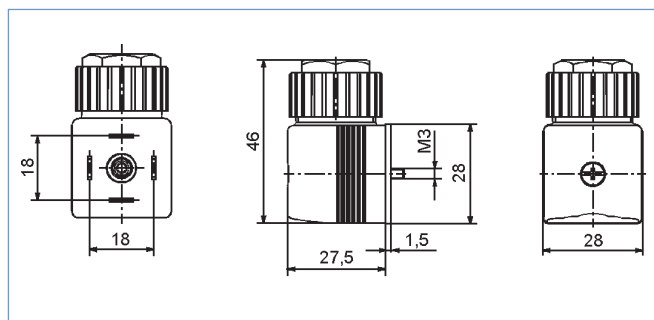
Connector for aggressive ambient with polypropylene

Mounting Instructions



- remove contact insert from cover
- insert cable through union nut
- wire cable according to connection plan
- replace contact insert
- screw-on union nut
- push gasket on tag connectors
- push cable plug firmly onto tags
- secure with pan screw M3 x 30

Dimensions [mm]



To find your nearest Bürkert facility, click on the orange box →

www.burkert.com

In case of special application conditions,
please consult for advice.

Subject to alterations
© Christian Bürkert GmbH & Co. KG

1003/6_EU-en_00891684