

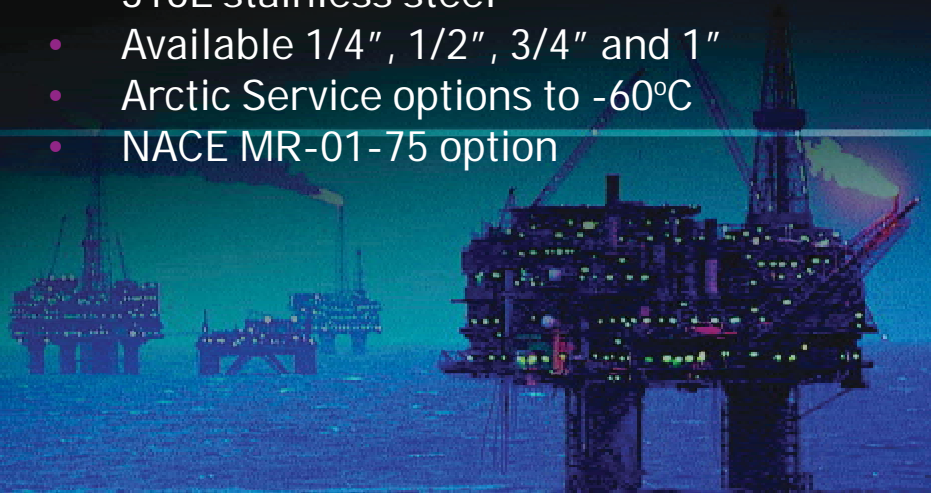
Pneumatic & Hydraulic Accessory Valves Quick Exhaust Valves

up to 690 bar

Superior performance
throughout the full
operational range

Features:

- 316L stainless steel
- Available 1/4", 1/2", 3/4" and 1"
- Arctic Service options to -60°C
- NACE MR-01-75 option



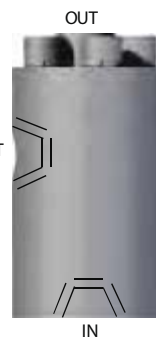
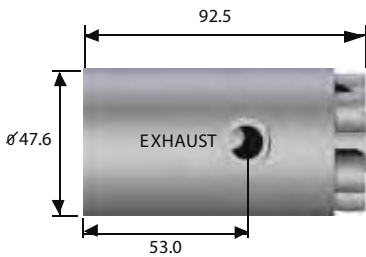
MATERIALS OF CONSTRUCTION

All valve bodies:- 316L stainless steel
 Internal components:- 316L stainless steel
 Seat:- 316L stainless steel / PEEK
 Seals:- Nitrile (standard) / PTFE.
 Alternative elastomers available for extreme conditions.

TEMPERATURE RANGE:

See elastomer options

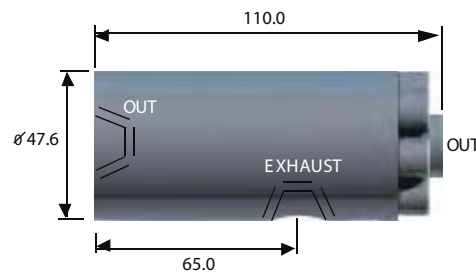
QEV15 RANGE



QEV15/04/10/V

Weight:
Approx 1.1 Kg.

Connections:
1/4" NPT



QEV15/38MP/15/V

Weight:
Approx 1.2 Kg.

In + Out - 3/8 medium pressure
Exhaust - 1/4 NPT

	Trigger Flow Rate to QEV l/m
QEV15 Standard	1.8
QEV15 Increased Forward Flow	3.6

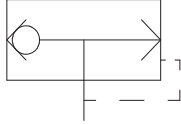
Trigger Flow Rate: Minimum flow rate required to switch valve to establish a flow from supply to cylinder.

For lower QEV trigger flow rates, contact Bifold Sales Office.

SELECTION CHART:

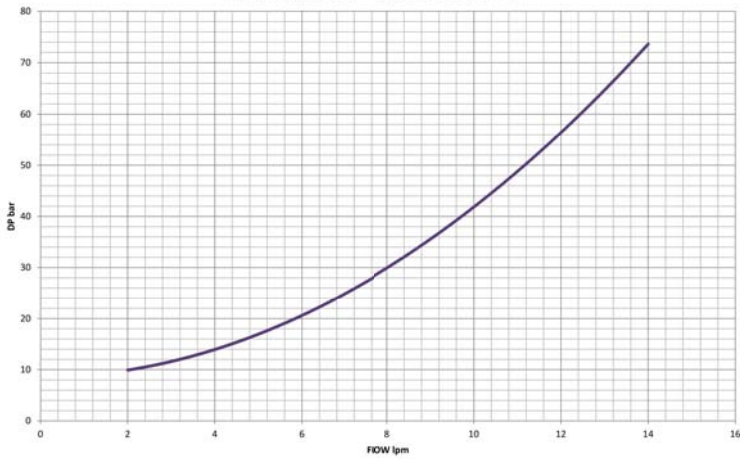
QEV15		Model Code	
04	1/4" NPT	Connections	
06	3/8" NPT, 1/2" NPT exhaust		
08	1/2" NPT		
38MP	3/8" MP connections - 1/4" NPT exhaust	Working Pressure	
06	414 bar		
10	690 bar		
	15	1035 bar (only 38MP)	O-ring Material
S	Nitrile	(-30°C to +130°C)	
V	Viton	(-20°C to +180°C)	
SA	Low Temp Nitrile	(-46°C to +130°C)	Options
H2S	NACE MR-01-75		
38	3/8" NPT exhaust (only 38MP valve)		
HF	Increased Forward Flow		
QEV15 / 04 / 10 / S / H2S		Example Code	

QEV15 PREFERRED RANGE:



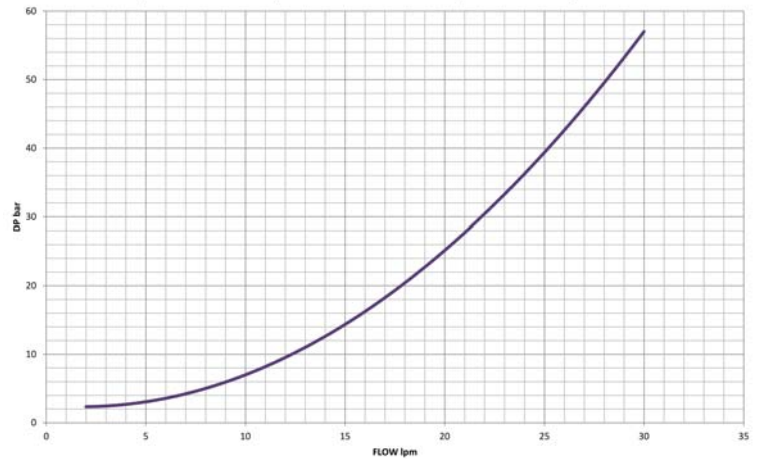
QEV15/06/06/S/H2S	414 bar, 3/8" NPT ports H2S compatible
QEV15/04/10/S	690 bar, 1/4" NPT ports
QEV15/08/10/S	690 bar, 1/2" NPT ports
QEV15/38MP/15/S	1035 bar, medium pressure ports (inlet / outlet), 1/4" NPT exhaust

QEV15 SUPPLY FLOW - MINERAL OIL @ 30cST



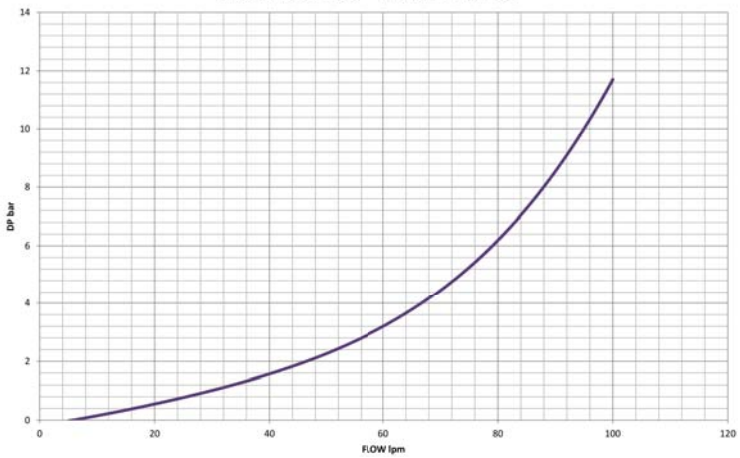
Flow rate between supply and cylinder.

QEV15 SUPPLY FLOW (INCREASED FORWARD FLOW) - MINERAL OIL @ 30cST



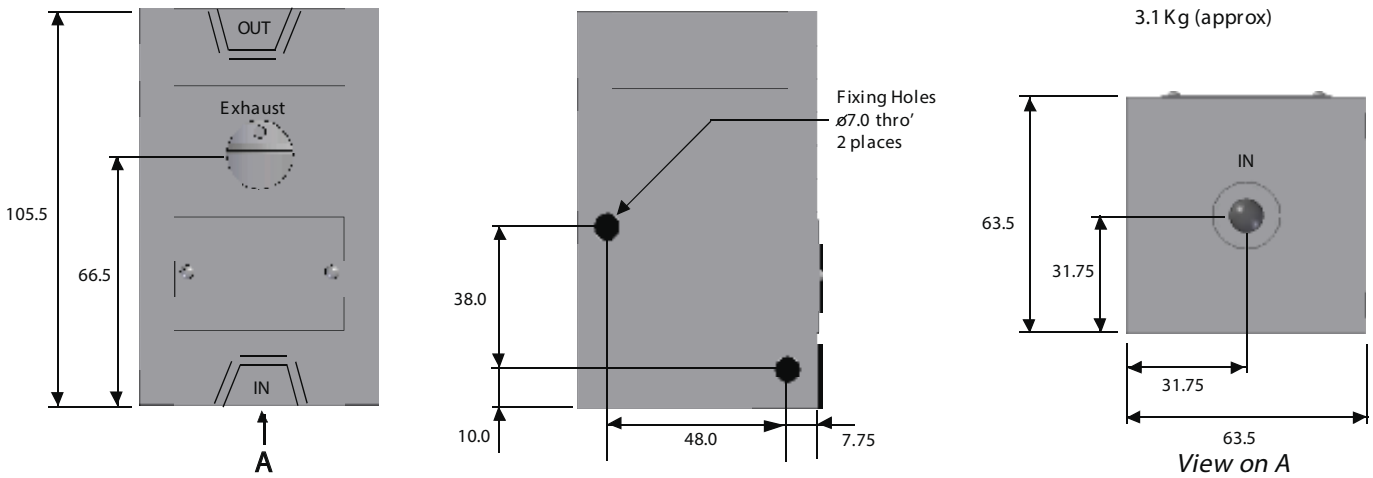
Flow rate between supply and cylinder with increased flow rate options.

QEV15 EXHAUST FLOW - MINERAL OIL @ 30cST



Flow rate between cylinder and exhaust.

QEV50 RANGE

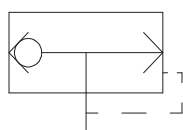
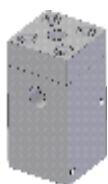


WEIGHT:
3.1 Kg (approx)

SELECTION CHART:

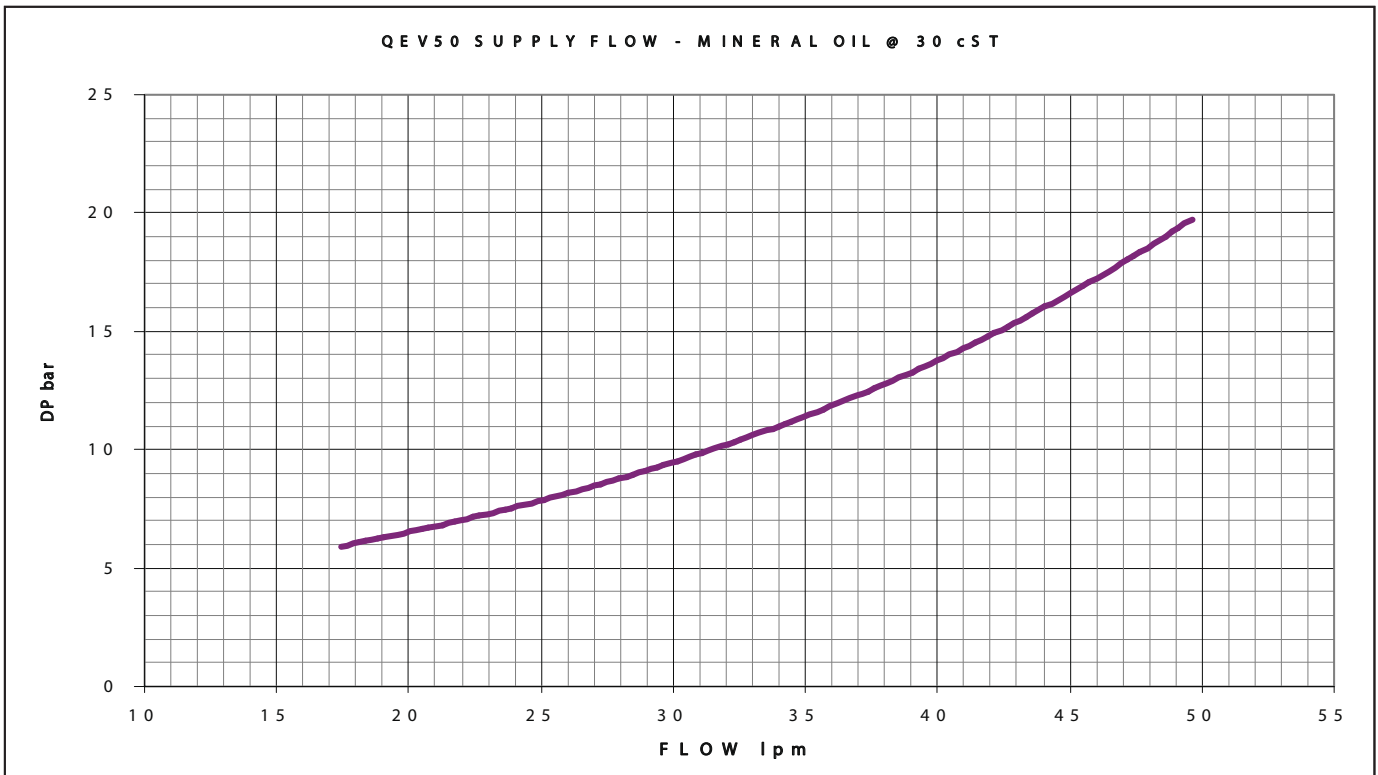
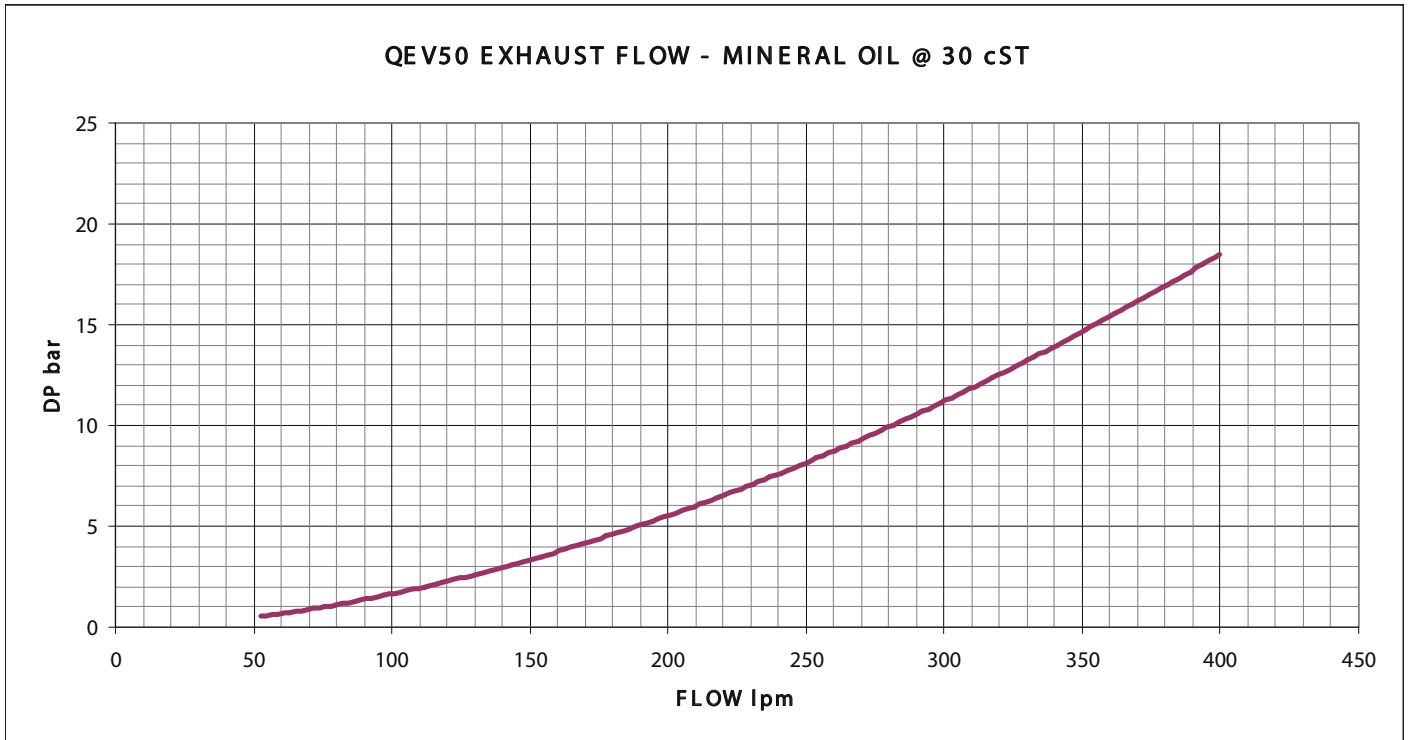
QEV50						Model Code
	08	1/2" NPT				Connections
		05	345 bar			Working Pressure
			S Nitrile (-30°C to +130°C) V Viton (-20°C to +180°C) SA Low Temp Nitrile (-46°C to +130°C)			O-ring Material
				H25 NACE MR-01-75 (consult Bifold Fluidpower)		Options
QEV50 / 08 / 05 / S / H25						Example Code

QEV50 PREFERRED RANGE:



QEV50/08/05/S

345 bar, 1/2" NPT ports, 350 lpm @ 15 bar DP



Pneumatic Quick Exhaust Valves

OPERATING MEDIA

• Air, sweet and sour gas

OPERATING PRESSURE

• 0-12 bar standard

TEMPERATURE RANGE:

See selection chart model code.

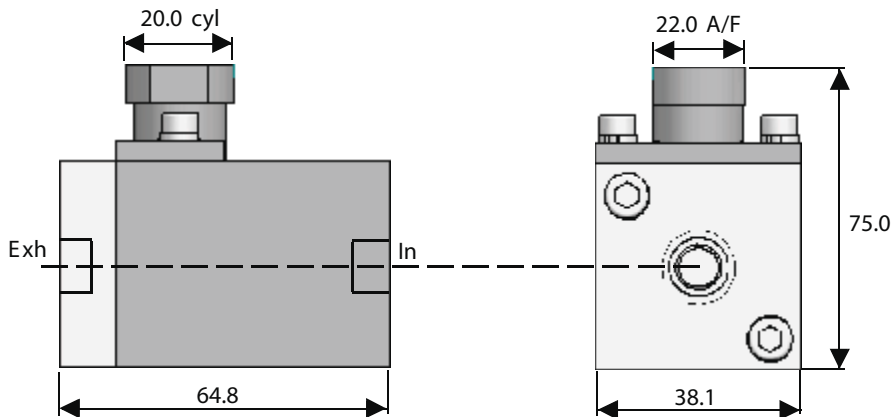
MECHANICAL CONSTRUCTION

- Body:- stainless steel 316L
- Fasteners:- Metric A4 18/10 316 grade stainless steel
- Seat Material:- Viton (standard). Alternative elastomers available for extreme conditions

SELECTION CHART

S	standard service	(-20°C to 180°C)	Model Code		
AS	arctic service	(-60°C to 60°C)			
06	1/4" NPT	Quick Exhaust Valve	Port Sizes		
09	3/8" NPT				
12	1/2" NPT				
19	3/4" NPT				
25	1" NPT				
QE			Configuration		
K4 Bug Vent			Options		
K6 BSPP straight port option					
K34 BSPT taper thread option					
XX			Revision Number		
S	06	- QE	- K6	- 01	Ordering Example

Example:- S09-QEV



Quick Exhaust Valves

1/4"
3/8"
1/2"
3/4"
1"

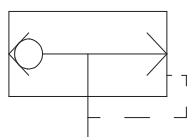
Working Press ures

1 - 12 bar g
0 - 12 bar g
0 - 12 bar g
1 - 12 bar g
1 - 12 bar g

Cv

1.1 (cyl to exh) / 0.9 (in to cyl)
3.0 (cyl to exh) / 1.7 (in to cyl)
3.5 (cyl to exh) / 1.9 (in to cyl)
8.3 (cyl to exh) / 6.5 (in to cyl)
10.0 (cyl to exh) / 8.2 (in to cyl)

Preferred Range:-



S06-QEV-01

1/4" Quick Exhaust Valve, flow as table above, 0 - 12 bar

S12-QEV-01

1/2" Quick Exhaust Valve, flow as table above, 0 - 12 bar

UK Office

Greenside Way, Middleton, Manchester, M24 1SW

Tel:- +44 (0)161 345 4777

Fax:- +44 (0)161 345 4780

E Mail:- marketing@bifold.co.uk

Web:- www.bifold-fluidpower.co.uk

USA Office

11490 Westheimer, Suite 900, Houston, Texas , 77077

Tel:- +1 713 783 4253

Fax:- +1 713 783 0067

Email:- marketing@bifold.co.uk

Web:- www.bifold-fluidpower.co.uk

Asia Pacific Office

Toa Payoh Industrial Park, Lorong 8 # 07-1475 , Singapore, 3109075

Tel:- +65 6735 1323

Fax:- +65 6735 1367

E Mail:- marketing@bifold.co.uk

Web:- www.bifold-fluidpower.co.uk

Quality Assurance

All Bifold products are manufactured to a most stringent QA programme to ensure that every product will give optimum performance and reliability. We are third party certified to BS EN ISO 9001:2008. Functional test certificates, letter of conformity and copies of original mill certificates, providing total traceability are available on request, to BS EN 10204 3.1 where available. We reserve the right to make changes to the specifications and design etc., without prior notice.

Accuracy of information

We take care to ensure that product information in this catalogue is reasonably accurate and up-to-date. However, our products and services are continually updated so to ensure accurate and up-to-date information please refer to the issue list on the web site or contact a member of our sales team.

