

FINE CONTROLS (UK) LTD



Fine Controls have been supplying process controls & instrumentation equipment since 1994, & now serves an ever expanding customer base, both in the UK & globally.

We offer a full range of valve & instrumentation products & services, with our product range representing leading technologies & brands:

Flow: Flow Meters & Transmitters, Flow Switches, Flow Control Valves & Batch Control Systems

Temperature: Temperature Probes & Thermowells, Temperature transmitters, Temperature Regulators & Temperature Displays

Level: Level Transmitters & Switches

Pressure: Pressure Gauges & Transmitters, Precision & High Pressure Regulators & I-P Converters, Volume boosters.

Precision Pneumatics: Pressure Regulators, I-P Converters, Volume Boosters, Vacuum Regulators

Valves: Solenoid & Pneumatic Valves, Control Valves & Positioners, Actuated Ball, Globe or Diaphragm Valves & Isolation Valves

Services: Repair, Calibration, Panel Build, System Design & Commissioning

A rotork® Brand
FAIRCHILD



bürkert



SIEMENS



alcon
SOLENOID VALVES

A rotork® Brand



MIDLAND-ACS
A rotork® Brand



Honeywell



Bourdon
Baumer Group



SOLDO
CONTROLS

A rotork® Brand



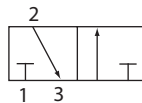
Fine Controls (UK) LTD, Bassendale Road, Croft Business Park,
Bromborough, Wirral, CH62 3QL UK
Tel: 0151 343 9966
Email: sales@finecontrols.com



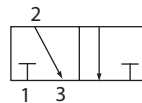
Features & Benefits

- 316 Stainless Steel construction as standard
- Designed for actuator control
- Large porting for high Kv
- Low power consumption
- Zero pressure rated
- Manual override and reset options available
- **Response time 100-150ms**

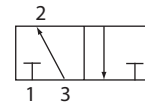
3/2
Normally Closed



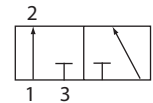
3/2
Diverter



3/2
Normally Open



3/2
Changeover



Specifications

Function:	Normally Closed, Normally Open, Universal
Ambient Temperature:	-20°C to +60°C
Maximum Viscosity:	115 SSU (liquid)
Body Material (Std):	Stainless Steel 316
Seal Material (Std):	Nitrile
Connection Type:	NPT

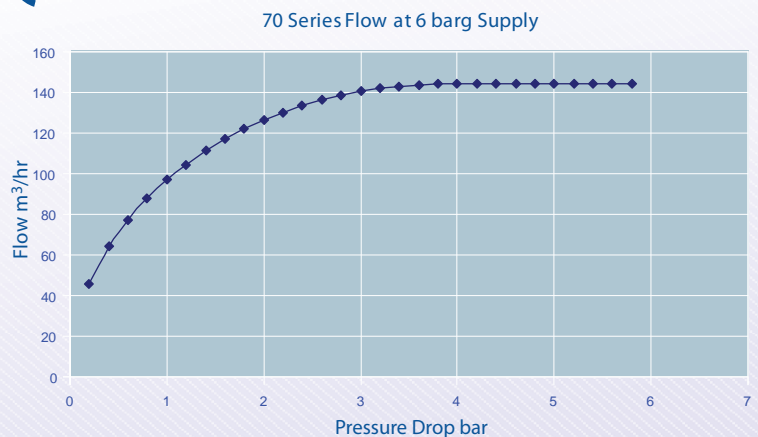
Features

Pipe Size	Kv	Operating Pressure Differential (Bar)		Power Watts	Internal Orifice mm	Weight Kg
		AC Voltages	DC Voltages			
1/4"	1.4	0 - 12	0 - 12	3.5	10.00	3.20
3/8"	1.4	0 - 12	0 - 12	3.5	10.00	3.20
1/2"	1.4	0 - 12	0 - 12	3.5	10.00	3.20

Electrical Characteristics

Coil Voltage DC (=):	12v, 24v, 110v
Coil Voltage AC 50Hz (~):	24v, 110v, 230v
Protection Class (Std):	Exd IIC T6
Electrical Connection:	Cable connector from M20 X 1.5 female conduit
Ingress Protection:	IP67
Coil Insulation:	Class H

Flow Data

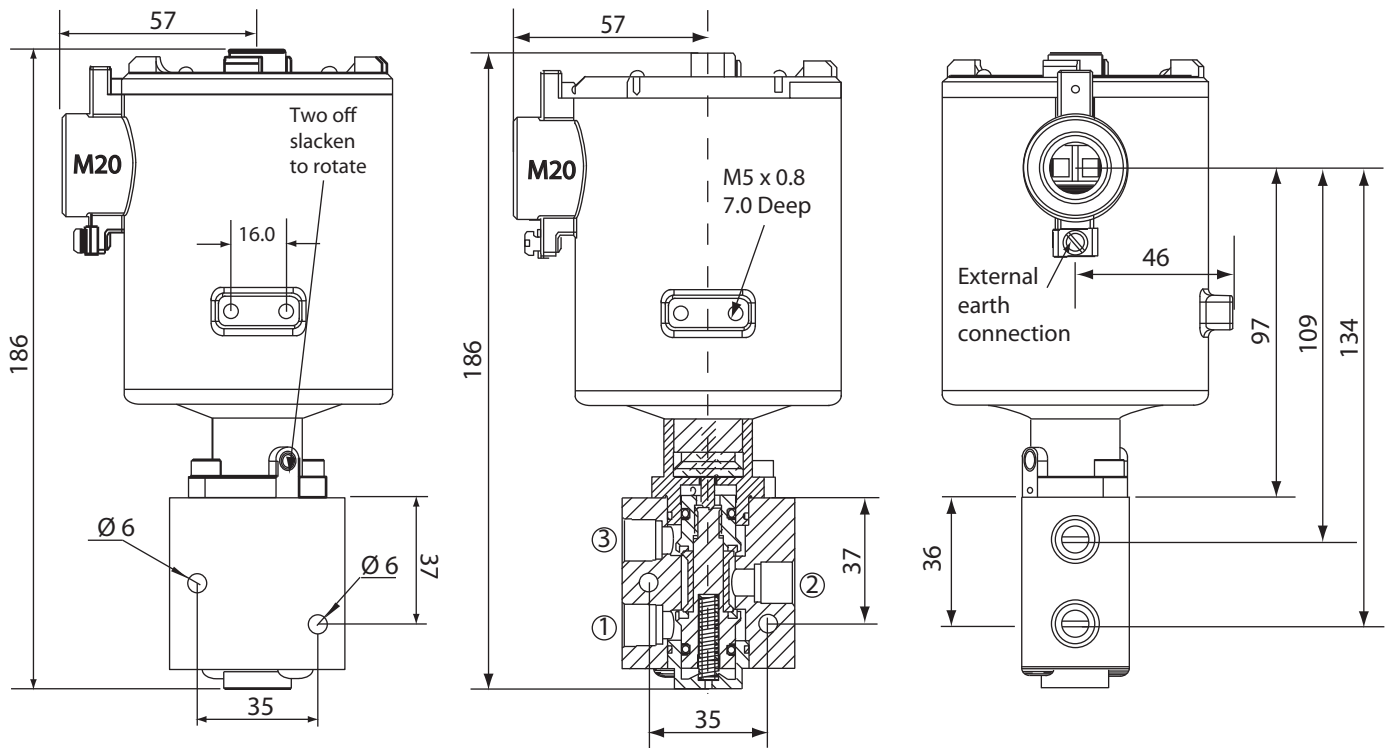


Certification Options Available



ITT

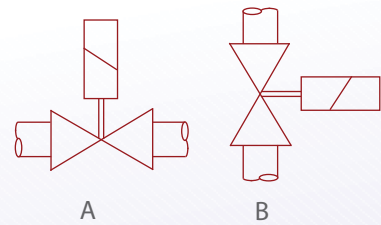
Dimensions



Note:

- Tested in accordance with BS EN 12266-1
- PED Compliant
- Dimension given in mm

Mounting



Options

<i>Solenoid Enclosure</i>
<i>Electrical Entry</i>
M20 X 1.5 Female 1/2" NPT F

<i>Body Material</i>
Stainless Steel 316

<i>Seal Material</i>	<i>Media Temperature Range</i>
EPDM	-50°C to +120°C
Viton	-20°C to +150°C

Optional surge suppression diode
High pressure versions
Low temp options

See corrosion reference guide and
sealing solutions for material compatibility