

FINE CONTROLS (UK) LTD



Fine Controls have been supplying process controls & instrumentation equipment since 1994, & now serves an ever expanding customer base, both in the UK & globally.

We offer a full range of valve & instrumentation products & services, with our product range representing leading technologies & brands:

Flow: Flow Meters & Transmitters, Flow Switches, Flow Control Valves & Batch Control Systems

Temperature: Temperature Probes & Thermowells, Temperature transmitters, Temperature Regulators & Temperature Displays

Level: Level Transmitters & Switches

Pressure: Pressure Gauges & Transmitters, Precision & High Pressure Regulators & I-P Converters, Volume boosters.

Precision Pneumatics: Pressure Regulators, I-P Converters, Volume Boosters, Vacuum Regulators

Valves: Solenoid & Pneumatic Valves, Control Valves & Positioners, Actuated Ball, Globe or Diaphragm Valves & Isolation Valves

Services: Repair, Calibration, Panel Build, System Design & Commissioning

 A rotork® Brand
FAIRCHILD



bürkert



SIEMENS



alcon
SOLENOID VALVES

A rotork® Brand



MIDLAND-ACS
A rotork® Brand



Honeywell



 **Bourdon**
Baumer Group



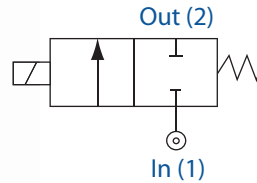
SOLDO
CONTROLS

A rotork® Brand



Fine Controls (UK) LTD, Bassendale Road, Croft Business Park,
Bromborough, Wirral, CH62 3QL UK
Tel: 0151 343 9966
Email: sales@finecontrols.com

21 Series
2/2 Normally Closed



Features & Benefits

- Direct acting
- Compact Valve Design
- Wide range of available orifices
- Zero Pressure Rated
- Choice of Valve Body Material and Seals
- Exd and Exm Options
- Choice of electrical connections
- Suitable for vacuum applications
- Valve operation is not affected by mounting position
- **Response time 5-25ms**

Electrical Characteristics

Available Voltage DC (=):	12v, 24v, 110v
Available Voltage AC 50Hz (~):	24v, 110v, 120v, 230v
Available Voltage AC 60Hz (~):	24v, 120v, 220v
Voltage tolerance:	+10% or -10%
Duty Cycle:	100% ED
Protection Class (Std):	IP65 (BS EN 60529) (plug supplied as standard)
Electrical Connection (Std):	PG9 Din Connector DIN 43650/ISO 4400 (EN 175301-803) Form 'A'
Coil Insulation:	Class H (BS EN 60085) 180°C (E5 type)
Power Rating:	19VA, 14.5 watts

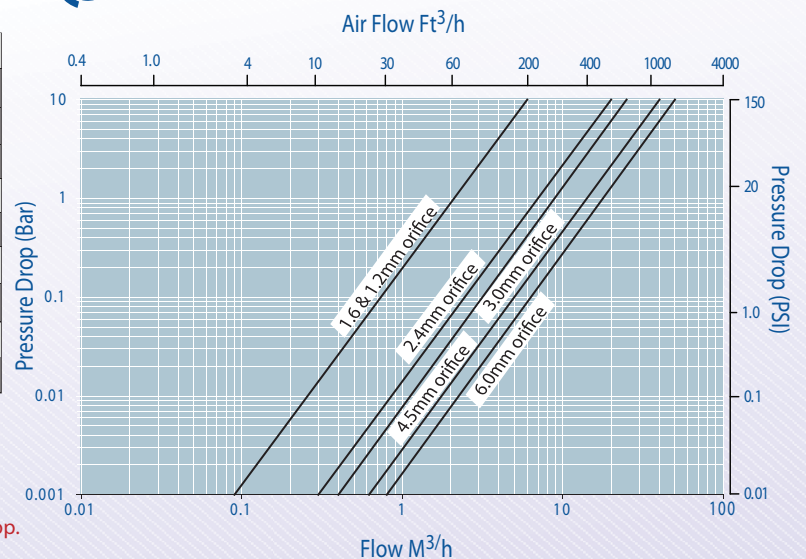
Features

Pipe Size	Qn	OPD (Bar)		P.Max Bar	Orifice mm	Cat No.
		AC Voltages	DC Voltages			
1/8"	30	0 - 100	0 - 100	100	1.2	21192115
1/8"	34	0 - 45	0 - 40	60	1.6	21112115
1/8"	117	0 - 20	0 - 20	60	2.4	21122115
1/8"	150	0 - 15	0 - 10	60	3.0	21132115
1/4"	30	0 - 100	0 - 100	100	1.2	21292115
1/4"	34	0 - 45	0 - 40	60	1.6	21212115
1/4"	117	0 - 20	0 - 20	60	2.4	21222115
1/4"	150	0 - 15	0 - 10	60	3.0	21232115
1/4"	250	0 - 7.0	0 - 5.5	60	4.5	21242115
1/4"	300	0 - 4.0	0 - 2.7	60	6.0	21252115

Specifications

Function:	Normally Closed, Energise to open
Ambient Temperature:	-10°C to +50°C
Maximum Viscosity:	115 SSU
Body Material (Std):	Brass CZ122
Flange Tube:	Stainless Steel 303
Plunger and Top Stop:	Stainless Steel 430FR
Springs:	Stainless Steel 302
Seal Material (Std):	Nitrile (BunaN)
Connection Type (Std):	BS21
Shading Coil:	Copper

Flow Data



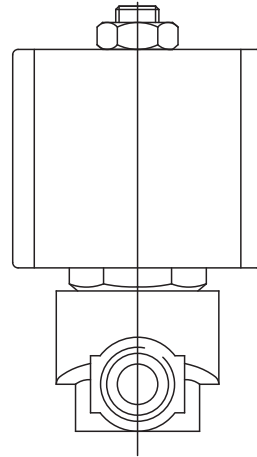
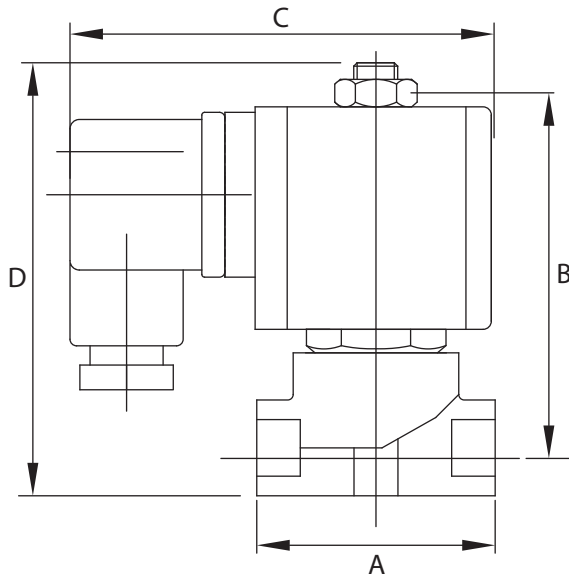
How to use the Flow Chart

1. Select the required flow.
2. Note the corresponding orifices/model and pressure drop.
3. Using orifices/model, (refer to the Features panel) for technical information

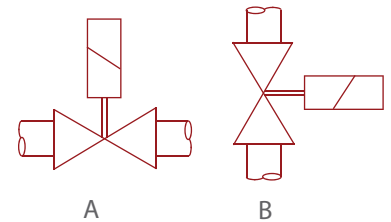


ITT

21 Series
2/2 Normally Closed



Mounting



Dimensions

Size	A	B	C	D	Weight (Kg)
1/8"	44	70	75	80	0.4
1/4"	44	70	75	80	0.4

Dimensions given in mm

Note:

- Tested in accordance with BS EN 12266-1
- PED Compliant

Solenoid Coil may be rotated to any angle.

Options

Solenoid Enclosure		
Protection Class	Electrical Entry	Ambient
EExd T6 (IP67)	M20 X 1.5 Female	-50°C to +40°C
EExd T4 (IP67)	M20 X 1.5 Female	-50°C to +70°C
Exm T5 (IP65)	M16 X 1.5 Male FLYING LEAD	-20°C to +40°C
EExia	M20 X 1.5	-40°C to +65°C

Body Material
Stainless Steel 316

Seal Material	Media Temperature Range
EPDM	-50°C to +120°C
Viton	-20°C to +150°C

See solenoid enclosures for specific details

- Manual Override Option
- Mounting Bracket Option Available
- LED power indicator option

See corrosion reference guide and sealing solutions for material compatibility